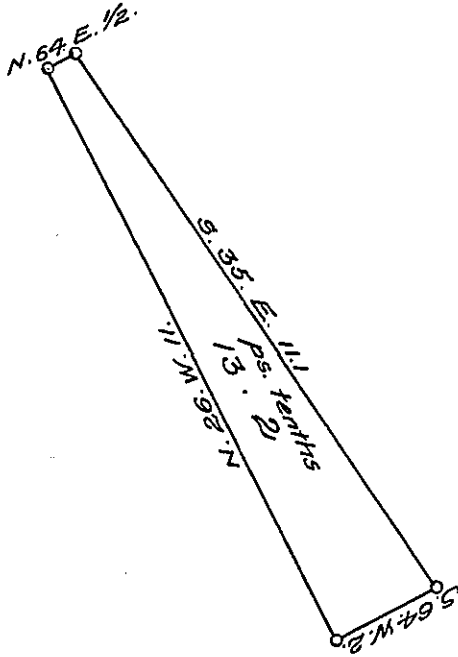




York County Shore

Lancaster County Shore



A Draught of Duck Island situate in the River Susquehanna in Little Britain township Lancaster County Opposite lands of John Kirk and about ninety perches to the Westward of James Caldwell's Island Containing thirteen perches Strict Measure surveyed in Pursuance of a Warrant dated the 11th day of September A. D. 1815 Granted to John Kirk and Hugh Glasgow.

p^c Jacob Hibshman D.S.

To Jacob Spangler Esq^r }
 Surveyor General }

IN TESTIMONY that the above is a copy of the original remaining on file in the Department of Internal Affairs of Pennsylvania, made conformably to an Act of Assembly approved the 16th day of February, 1833, I have hereunto set my Hand and caused the Seal of said Department to be affixed at Harrisburg, this thirty first day of January 1908.

Henry Houck
 Secretary of Internal Affairs.